

Machines
and Tools
for Professionals

Autumn/Winter 2011

Promotion

NEW

Cutting and deburring
up to DN 100
REMS Cento



REMS

for Professionals

Cutting and deburring up to DN 100.



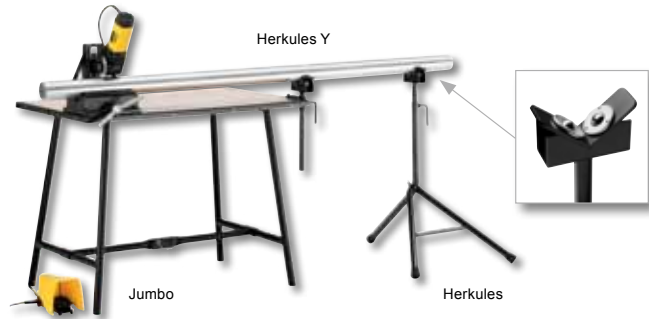
1200 W
Only 17 kg

German
quality product



Stand

Herkules



Herkules Y

Jumbo

Herkules



New



REMS Cento – cutting up to DN 100. Right-angled. Chipless. Without outer burr. Dry. Ultra-fast, e.g. INOX Ø 54 mm in only 4 seconds.

Pipes of the press fitting systems made of stainless steel, carbon steel, copper, Ø (8)22–108 mm. Steel pipes DIN EN 10255 (DIN 2440) DN (10) 20–100, Ø (1/4) 3/4–4". Cast pipes (SML) DN 50–100. Plastic tubes, multilayer composite tubes Ø (10)25–110 mm, s ≤ 7 mm.

Unique! Patent EP 10 2005 053 179

Driven cutting wheel and straight in-feed for fast cutting

REMS Cento

Pipe cutting machine for fast, right angled cutting of pipes Ø (8)22–108 mm, without outer burr. For pipes of the press fitting systems of stainless steel, carbon steel, copper. For steel pipes, plastic tubes, multilayer composite tubes, cast pipes (SML). With maintenance-free gear, proven 110 V, 50–60 Hz, 1200 W universal motor. Speed 115 rpm. Rollers made of hardened precision steel. Safety foot switch. Ring spanner. Without cutting wheel.

Art. No. 845001 ~~849.00~~



REMS cutting wheel Cu-INOX free!

Value £ 53.10

£ **689.⁰⁰**

REMS cutting wheel Cu-INOX

for pipes of press fitting systems made of stainless steel, copper, carbon steel

Art. No. 845050

£ **53.10** /piece

REMS cutting wheel Cu

especially for pipes of the press fitting systems made of copper

Art. No. 845053

£ **53.10** /piece

REMS cutting wheel St

for steel pipes, cast pipes (SML)

Art. No. 845052

£ **53.10** /piece

REMS cutting wheel V

for plastic and multilayer composite tubes, wall thickness s ≤ 7 mm

Art. No. 845051

£ **53.10** /piece

REMS cutting wheel C-SF

for cutting carbon steel pipes and simultaneously producing a welding chamfer

Art. No. 845055

£ **69.00** /piece

Cento Accessory Pack 1

consisting of stand and REMS Herkules

Art. No. 120X01 ~~297.00~~

£ **248.⁰⁰**

Cento Accessory Pack 2

consisting of Jumbo, Herkules and Herkules Y

Art. No. 120X02 ~~504.00~~

£ **419.⁰⁰**

Inside pipe deburring device up to DN 100 – ideal for pipes of the pressfitting systems etc.

REMS REG 28–108

Inside pipe deburring device for pipes of Ø 28–108 mm, Ø 3/4–4".

For electric drive by the REMS Cento pipe cutting machine.

Art. No. 113840

£ **179.⁰⁰**

Protected by a German utility model registration!

REMS REG 10–54 E – also for electric drive

Outer/inner pipe burr remover for pipes Ø 10–54 mm, 1/2–2 1/4". Also for electric drive by conventional power screwdriver (speed ≤ 300 rpm) or by the REMS Cento pipe cutting machine (as of machine no. 100000) or by the REMS Turbo Cu-INOX pipe circular saw machine (date of manufacture from 09/2011).

Art. No. 113835 ~~71.10~~

£ **65.⁰⁰**

New

German quality product

REMS technology
Li-Ion



Only 2.1 kg

REMS Akku-Nano – cutting up to DN 40.
Ultra-light. Fast. Right-angled. Chipless.
No outside burr. Dry.

REMS Akku-Nano Basic-Pack

Cordless pipe cutting machine for fast, right angled cutting of pipes Ø 10–40 mm, without outer burr. For pipes of the press fitting systems made of stainless steel, carbon steel, Ø 12–28 mm, copper Ø 10–35 mm. Multilayer composite tubes Ø 10–40 mm. With maintenance-free gear, powerful 10.8 V, 270 W battery motor. Speed 130 rpm. Safety switch. Li-Ion 10.8 V, 1.3 Ah battery, Li-Ion 110 V, 50–60 Hz rapid charger, 65 W. Back pressure rollers of hardened precision steel. Single open ended wrench size 8. Without cutting wheel. In carrying bag. Art. No. 844011 374.00

£ **319.00**

REMS cutting wheel Cu-INOX

for pipes of press fitting systems made of:

stainless steel, carbon steel, copper Art. No. 844050 17.90 £ **16.00** /piece

REMS cutting wheel V

for multilayer composite tubes

Art. No. 844051 17.90 £ **16.00** /piece

German quality product



Only 1.9 kg

REMS Nano – cutting up to DN 40.
Ultra-light. Fast. Right-angled. Chipless.
No outside burr. Dry.

REMS Nano Basic-Pack

Electric pipe cutting machine for fast, right angled cutting of pipes Ø 10–40 mm, without outer burr. For pipes of the press fitting systems made of stainless steel, carbon steel, Ø 12–28 mm, copper Ø 10–35 mm. Multilayer composite tubes Ø 10–40 mm. With maintenance-free gear, proven 110 V, 50–60 Hz, 200 W DC motor. Speed 130 rpm. Back pressure rollers made of hardened precision steel. Safety switch. Single open ended wrench size 8. Without cutting wheel. In carrying bag. Art. No. 844010 284.00

£ **239.00**

REMS cutting wheel Cu-INOX

for pipes of press fitting systems made of:

stainless steel, carbon steel, copper Art. No. 844050 17.90 £ **16.00** /piece

REMS cutting wheel V

for multilayer composite tubes

Art. No. 844051 17.90 £ **16.00** /piece

REMS REG – Robust quality tool
for removing outer and inner burr from pipes.



**For stainless steel pipes, other steel pipes,
copper, brass, aluminium and plastic pipes.**

REMS REG 8–35

Outer/inner pipe burr remover for pipes Ø 8–35 mm, ½–1 ¼".

Art. No. 113825 35.10

£ **29.00**

REMS REG 10–54

Outer/inner pipe burr remover for pipes Ø 10–54 mm, ½–2 ¼".

Art. No. 113830 42.30

£ **35.00**

Protected by a German utility model registration!

REMS REG 10–54 E – also for electric drive

Outer/inner pipe burr remover for pipes Ø 10–54 mm, ½–2 ¼". Also for electric drive by conventional power screwdriver (speed ≤ 300 rpm) or by the REMS Cento pipe cutting machine (as of machine no. 100000) or by the REMS Turbo Cu-INOX pipe circular saw machine (date of manufacture from 09/2011).

Art. No. 113835 71.10

£ **65.00**



REMS RAS Cu-INOX – highly resistant pipe cutter for cutting pipes made of stainless steel, carbon steel, copper etc.

Robust, sturdy structure for harsh conditions. Very stable spindle, long spindle guide and specially hardened back pressure rollers. Exact guiding on the pipe, easy engagement, easy cutting and accurate, right-angled cut as a result.

International Design Award

German quality product



REMS RAS Cu-INOX 6-42
Pipe cutter for pipes Ø 6-42, ¼-1½".
Art. No. 113380 87-40

£ **79.00**



REMS RAS Cu-INOX 3-35
Pipe cutter for pipes Ø 3-35 mm, ¼-1¼", with integrated pipe burr remover.
Art. No. 113350 33-70

£ **24.00**



REMS RAS Cu-INOX 6-64
Pipe cutter for pipes Ø 6-64, ¼-2½".
Art. No. 113400 103-00

£ **89.00**



REMS RAS Cu-INOX 3-42
Pipe cutter for pipes Ø 3-42 mm, ¼-1¼", with integrated pipe burr remover.
Art. No. 113330 43-60

£ **29.00**

REMS RAS Cu – highly resistant pipe cutter especially for cutting copper pipes

Very stable spindle, long spindle guide and specially hardened back pressure rollers. Exact guiding on the pipe, easy engagement, easy cutting and accurate, right-angled cut as a result.

International Design Award

Quick adjustment of the engagement spindle in both directions.



REMS RAS Cu 8-42
Pipe cutter for pipes Ø 8-42, ¼-1½".
Art. No. 113370 77-50

£ **65.00**



REMS RAS Cu 3-35
Pipe cutter for pipes Ø 3-35 mm, ¼-1¼", with integrated pipe burr remover.
Art. No. 113340 33-60

£ **24.00**

German quality product



REMS RAS Cu 8-64
Pipe cutter for pipes Ø 8-64, ¼-2½".
Art. No. 113410 89-90

£ **75.00**



REMS RAS Cu 3-42
Pipe cutter for pipes Ø 3-42 mm, ¼-1¼", with integrated pipe burr remover.
Art. No. 113320 39-90

£ **27.50**

REMS RAS P – highly resistant pipe cutter for cutting plastic and multilayer composite tubes.

Very stable spindle, long spindle guide and specially hardened back pressure rollers. Exact guiding on the pipe, easy engagement, easy cutting and accurate, right-angled cut as a result. **Quick adjustment of the engagement spindle in both directions.**

International Design Award

German quality product



REMS RAS P 10-40
Pipe cutter for pipes Ø 10-40 mm, ½-1½".
Art. No. 290050 77-90

£ **65.00**



REMS RAS P 50-110
Pipe cutter for pipes Ø 50-110.2-4"
Art. No. 290100 124-00

£ **105.00**



REMS RAS P 10-63
Pipe cutter for pipes Ø 10-63, ½-2"
Art. No. 290000 85-40

£ **75.00**



REMS RAS P 110-160
Pipe cutter for pipes Ø 110-160, 4-6".
Art. No. 290200 153-00

£ **125.00**

Up to 200 cut sections per battery charge!



Only 1.2 kg!

Wedge-shaped blade for universal cutting of plastic and multilayer composite tubes



REMS Akku-ROS P 40 – fast, easy cutting of pipes. Powerful, e.g. Ø 20 mm multilayer composite tubes in only 4 s.

REMS Akku-ROS P 40 Set

Cordless pipe shears for fast, easy cutting of plastic and multilayer composite tubes $\varnothing \leq 40$ mm, $\varnothing \leq 1\frac{1}{2}$ ", $s \leq 6.7$ mm. Electrical drive with powerful 9.6 V, 70 W battery motor, maintenance-free gear, safety switch, on/off switch. NiMH 9.6 V, 1.0 Ah battery, NiMH 100–240 V, 50–60 Hz, 6 W battery charger. With wedge-shaped blade. In a box.
Art. No. 291310 128.00

£ **89.00**

REMS Cut 110 P – cutting and chamfering at the same time.



REMS Cut 110 P Set Set 50-75-110

Pipe cutting and pipe chamfering tool for plastic pipes in ABS, PB, PE, PE-HD, PE-X, PP, PVC, PVDF, $\varnothing 40 - 110$ mm. Quick action clamp $\varnothing 110$ mm with clamp inserts $\varnothing 50$ and 75 mm. Tool set P with cutting and chamfering blade P, s 11. In sturdy case.
Art. No. 290400 288.00

£ **249.00**

Tool set Cu-INOX

with cutter wheel Cu-INOX 3–120, s 4

Art. No. 290433

£ **43.70**



REMS MSG – rational sleeve welding

Heating elements according to DVS
High quality PTFE coating

REMS MSG 63 FM Set 20-25-32

Heating element sleeve welding device for plastic tubes and mouldings made of PB, PE, PP, PVDF. Heating element 110 V, with PTFE-coated heating nozzles, heating sleeves for $\varnothing 20, 25, 32$ mm. Fixed temperature for PP tubes set to 260°C , with mechanical temperature regulation. Shelf stand. Holder for workbench for fastening the device in a horizontal or vertical position. Allen key for assembling and disassembling the heating nozzles and heating sleeves.
In sturdy steel case.
Art. No. 256231 628.00

£ **449.00**

REMS Cat ANC VE – saws everything any-where. Extremely versatile and powerful.



German quality product

1050 W – 3.0 kg



ANC – for maximum stress

REMS Cat ANC VE

Electric universal reciprocating saw with Vario Electronics (VE) for free-hand sawing up to 6", 250 mm. Drive machine with spade handle, maintenance-free, water and dust proof oscillation drive with all-round needle bearing crank drive (ANC), aggressive orbital stroke, powerful 110 V, 50–60 Hz, 1050 W universal motor, safety tip switch. Stepless electronic speed control (accelerator switch). Universal saw blade holder. Allen key. 1 REMS universal saw blade 150 mm. In sturdy steel case.
Art. No. 560040 306.00

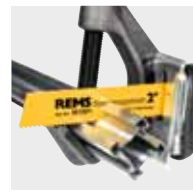
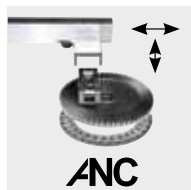
£ **209.⁰⁰**

REMS Tiger ANC – the pipe reciprocating saw. Saws easily, fast and at right angles.



German quality product

1050 W – only 3 kg



ANC – for maximum stress

REMS Tiger ANC Set

Electric pipe reciprocating saw for fast, easy, right-angled sawing with guide holder and for free-hand sawing up to 6", 250 mm. Drive machine with straight handle, maintenance-free, water and dust proof oscillation drive with all-round needle bearing crank drive (ANC), aggressive orbital stroke, powerful 110 V, 50–60 Hz, 1050 W universal motor, safety tip switch. Fixed number of strokes. Overload protection. Universal saw blade holder. Allen key. Guide holder up to 2". 2 REMS special saw blades up to 2". In sturdy steel case.
Art. No. 560020 423.00

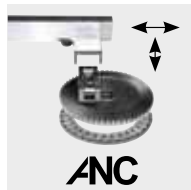
£ **359.⁰⁰**

REMS Tiger ANC SR – with Speed-Regulation. Saws easily, quickly and at right angles.



German quality product

1400 W – 3.1 kg



ANC – for maximum stress

REMS Tiger ANC SR Set

Electric pipe reciprocating saw with Speed Regulation (SR) for fast, easy, right-angled sawing with guide holder and for free-hand sawing up to 6", 250 mm. Drive machine with straight handle, maintenance-free, water and dust proof gear with all-round needle bearing crank drive (ANC), aggressive orbital stroke, powerful 110 V, 50–60 Hz, 1400 W universal motor, safety tip switch. Stepless electronic speed control with sensitive start-sawing, speed generator, temperature monitor and stall protection. Universal saw blade holder. Allen key. Guide holder up to 2". 2 REMS special saw blades up to 2". In sturdy steel case.
Art. No. 560026 499.00

£ **409.⁰⁰**

Saw blades for REMS Panther ANC VE, Cat ANC VE, Tiger ANC/VE/SR, Akku-Cat ANC VE and other makes.

| Description | Art.-No. | List price | Promotion price |
|---|----------|------------|-----------------|
| REMS special saw blades 2" (Pack of 5) | 561007 | £ 35.70 | £ 25.00 |
| REMS special saw blades 2" (Pack of 5) | 561001 | £ 33.90 | £ 24.50 |
| REMS special saw blades 4" (Pack of 5) | 561002 | £ 44.90 | £ 30.00 |
| REMS universal saw blades 100 (Pack of 5) | 561006 | £ 22.40 | £ 17.00 |
| REMS universal saw blades 150 (Pack of 5) | 561005 | £ 32.00 | £ 22.00 |
| REMS universal saw blades 200 (Pack of 5) | 561003 | £ 42.80 | £ 29.00 |
| REMS universal saw blades 300 (Pack of 5) | 561004 | £ 62.90 | £ 39.00 |
| REMS saw blades 100 (Pack of 5) Metal 3 mm+ | 561101 | £ 12.50 | £ 10.00 |
| REMS saw blades 150 (Pack of 5) Metal 3 mm+ | 561103 | £ 14.90 | £ 11.90 |

| Description | Art.-No. | List price | Promotion price |
|--|----------|------------|-----------------|
| REMS saw blades 200 (Pack of 5) Metal 3 mm+ | 561102 | £ 18.60 | £ 14.90 |
| REMS saw blades 150 (Pack of 5) Metal 1-3 mm | 561104 | £ 14.90 | £ 11.90 |
| REMS saw blades 150 (Pack of 5) Metal 1-3 curved | 561107 | £ 12.20 | £ 9.80 |
| REMS saw blades 150 (Pack of 5) 4 mm+ pallets | 561110 | £ 14.10 | £ 11.30 |
| REMS saw blades 300 (Pack of 5) Wood | 561111 | £ 17.10 | £ 13.70 |
| REMS saw blades 150 (Pack of 5) P plasterboard | 561115 | £ 11.60 | £ 9.30 |



REMS Push – reliably tight.

Brass pressure piston



Tank volume 12 l
up to 60 bar

REMS Push

Manual pressure testing pump with pressure gauge, $p \leq 60$ bar/6 MPa/870 psi, for pressure and leak testing of pipe systems and tanks up to 60 bar/6 MPa/870 psi. Corrosion-resistant, powder-coated sheet steel tank for 12 l. 1.5 m high-pressure hose with $\frac{1}{2}$ " connection. In a box. Art. No. 115000 ~~162.00~~

£ **129.00**

New



Stainless steel tank

REMS Push INOX

Manual pressure testing pump with pressure gauge, $p \leq 60$ bar/6 MPa/870 psi, for pressure and leak testing of pipe systems and tanks up to 60 bar/6 MPa/870 psi. Stainless steel tank for 12 l. 1.5 m high-pressure hose with $\frac{1}{2}$ " connection. In a box. Art. No. 115001 ~~226.00~~

£ **169.00**

up to 60 bar 1750 W. Self-priming.



REMS E-Push – electrical filling and testing.

- High-pressure hose with fabric inlay prevents falsification of the measuring result
- Suction hose with suction filter
- High-power piston pump
- High displacement of 7 l/min

REMS E-Push

Electric pressure testing pump with pressure gauge, $p \leq 60$ bar/6 MPa/870 psi, for pressure and leak testing of pipe systems and tanks up to 60 bar/6 MPa/870 psi. Pump unit with 110 V, 50 Hz, 1750 W condenser motor. 1.5 m suction hose with $\frac{1}{2}$ " connection. 1.5 m high-pressure hose with $\frac{1}{2}$ " connection. In a box. Art. No. 115100 ~~540.00~~

£ **389.00**

New

REMS Solar-Push – filling, flushing and venting in one action. Self priming. High displacement. Ideal for solar power systems, ground heat systems and underfloor heating.

Easy cleaning and simple filling thanks to large opening in the plastic container.

Practical grip handles for easy carrying of the plastic container.



REMS Solar-Push K 60

Electric filling and flushing unit for fast, easy filling, flushing and venting of closed systems. Transport volume ≤ 50 l/min, tank volume 30 l. With centrifugal pump, temperature-resistant for continuous load $\leq 60^\circ\text{C}$. Transport pressure ≤ 5 bar/0.5 MPa/73 psi. Condenser motor 230 V / 110 V, 50 Hz, 860 W. 2 pieces flexible, transparent PVC fabric hoses $\frac{1}{2}$ " T60, each 3 m long, temperature-resistant $\leq 60^\circ\text{C}$. In box.

Art. No. 115312 495-00

£ **449.⁰⁰**

REMS Solar-Push I 80

Electric filling and flushing unit for easy and fast filling, flushing and venting of closed systems. Pumping capacity ≤ 27 litres/min, tank volume 30 litres. With impeller pump, temperature resistant during constant use $\leq 80^\circ\text{C}$. Pumping pressure ≤ 6.5 bar/0.65 MPa/94 psi. Capacitor motor 230 V, 50 Hz, 550 W. Pressure release valve. 2 flexible EPDM-fabric hoses $\frac{1}{2}$ " T100, 3 m long, high temperature resistant $\leq 100^\circ\text{C}$. In carton.

Art. No. 115311 540-00

£ **499.⁰⁰**



Fine filter with fine filter bag 70 μm

consisting of screw cap with return connection for return line with $\frac{3}{4}$ " union, adapter, 1 fine filter bag 70 μm , for flushing underfloor heating/wall radiators and clearing sludge

Art. No. 115220

£ **30.¹⁰**

Fine filter with fine filter cartridge 50 μm

washable, with large dirt collection vessel, for return line with $\frac{3}{4}$ " union, for flushing underfloor heating/wall radiators and clearing sludge

Art. No. 115323

£ **88.²⁰**

Changeover valve flow direction

complete with EPDM fabric hose $\frac{1}{2}$ " T100, for flushing underfloor heating/wall radiators and effective clearance of sludge by pressure surges when flow direction changes

Art. No. 115326

£ **89.⁰⁰**



REMS tile drilling – for dry drilling

Diamond-studded dry drill bits for fast and clean drilling into all types of tiles, e.g. ceramics, porcelain, granite, marble.

No water required.

Special wax filling inside the dry drill bit acts as coolant, becoming fluid as it is heated, cooling the dry drill bit.

Easy, free hand drilling by use of drilling aid with vacuum attachment.

Hexagonal connection for $\frac{1}{4}$ " bit socket of all common electric drills and drill screws.



New

REMS tile drilling Set 6-8-10

3 tile drill bits $\varnothing 6, 8, 10$ mm, drilling aid with vacuum attachment.

Art. No. 181700 127-00

£ **89.⁰⁰**

New



REMS Pull-Push – fast removal of blockages.

High downforce thanks to front adjustable grip handle.

2 adaptor sleeves for optimum adaptation to the problem area:
Short sleeve for sinks, basins and baths, long sleeve for toilets.

REMS Pull-Push

Manual suction / pressure pump for fast removal of blockages.
With short and long sleeves. In carton.

Art. No. 170300 39.00

£ **69.00**

With automatic spiral feed and return



0–550 rpm
620 W, only 5.2 kg

REMS Mini-Cobra A

Electric pipe cleaning device with automatic spiral feed and return, for pipes Ø 20–50 (75) mm. For pipe cleaning spirals Ø 8 and 10 mm. Drive machine with maintenance-free gear, 110 V, 50–60 Hz, 620 W universal motor, extra torque powerful left and right-hand rotation at low speeds, safety switch. Stepless, electronic speed control (accelerator switch). Spiral drum made of impact-resistant, glass fibre-reinforced plastic. Spiral with core 8 × 7.5 m. In box.

Art. No. 170020 495.00

German quality product

£ **349.00**

Proven, handy device for quick action in case of blocked pipes in the kitchen, bathroom and toilet.



German quality product

REMS Mini-Cobra

Pipe cleaning device for pipes Ø 20–50 (75) mm, with crank handle and hexagonal driver for conventional drive machine (electric, slow drilling machine with continuous drive or power drill/screwdriver). For pipe cleaning spirals Ø 6, 8 and 10 mm. Spiral drum made of impact-resistant, glass fibre-reinforced plastic. Quick-clamping chuck. Spiral 8 × 7.5 m. In box.

Art. No. 170010 108.00

£ **99.00**

German quality product



REMS Cobra – Pipe free – quick and easy.

Fast rotator with spiral sections for working lengths up to 70 m. Effective chain spinning and cutting up to 740 rpm.

Closed drive spindle protects motor and drive against dirt and water.

REMS Cobra 22 Set 16+22

Electric pipe cleaning machine for pipes Ø 20–150 mm. Drive machine with maintenance-free toothed belt drive, 110 V, 50 Hz, 750 W condenser motor, right and left-hand rotation, guide hose. 6 spiral sections 16 × 2.3 m in the spiral cage, straight drill 16, club drill 16, toothed blade drill 16/25, spiral cutting pin 16, 5 spiral sections 22 × 4.5 m in the spiral cage, straight drill 22, recovery drill 22, funnel drill 22, toothed cross blade drill 22/35, spiral cutting pin 22, 2 pairs of guide gloves, steel case for every tool kit.

Art. No. 172012 1.439.00

£ **999.00**

REMS Mini-Press ACC – The real one-hand radial press!
Only 2.4 kg! Universal up to Ø 40 mm. Ultra-light.
Ultra-small. Ultra-handy. Ultra-fast. 360° rotatable.



Extremely "mini"
 < 34 cm

Due to the length of less than 34 cm, pressing is possible in particularly narrow places.



Charging status indicator



←ACC→
 Automatic Circuit Control
 with automatic retraction
 German quality product



REMS Mini-Press ACC Li-Ion Basic-Pack

Cordless radial press with automatic return after completed pressing cycle (forced process), for producing press connections Ø 10–40 mm. For driving REMS Mini pressing tongs Rotating pressing tongs seat with automatic locking. Electro-hydraulic drive with powerful 14.4 V, 420 W battery motor, robust planetary gear, eccentric reciprocating pump and compact high power hydraulic system, safety switch Li-Ion 14.4 V, 1.3 Ah battery, Li-Ion/Ni-Cd 230 V, 50–60 Hz, 65 W rapid charger. In sturdy steel case.
 Art. No. 578012 900.00

+ gift package with a value of £ 318.30



REMS Mini-Press ACC Li-Ion Basic-Pack;
 2 REMS mini pressing tongs of your choice;
 1 REMS cordless LED lamp Li-Ion; extra battery Li-Ion 14.4 V, 1.3 Ah
 Value £ 1,218.30

£ **899.⁰⁰**



New



Battery (accessory)



With hanging device



Ultra bright hand and standing lamp.
For cordless and mains operation.
145° continuously tiltable.

LED technology with high brilliance
 Ergonomically designed handle with soft grip
 Battery compartment integrated into the handle Li-Ion 14.4 V batteries or Li-Ion 230 V power supply for mains operation in place of Li-Ion 14.4 V battery as an accessory.
 Practical, foldout hanging device
 Lamp head continuously tiltable by 145° for better illumination.
 Rapid charger for short charging times (1h) as accessory.
 No memory effect for maximum battery performance.

REMS cordless LED lamp Li-Ion

Hand and standing lamp for Li-Ion 14.4 V batteries or Li-Ion 230 V power supply.
 Without battery, without rapid charger, without power supply. In blister pack.
 Art. No. 175200

£ **26.¹⁰**

German quality product



Only 4.7 kg

36
MONTHS
WARRANTY!

REMS Power-Press E – the low cost radial press up to Ø 108 mm. Compact. Handy. Ultra-light.

REMS Power-Press E Drive Unit

Electric radial press for production of press connections Ø 10–108 mm. For driving REMS pressing tongs/pressing rings and other suitable makes of pressing tongs/pressing chains. Pressing tongs seat with automatic locking. Electro-mechanical drive with proven 230 V, 50–60 Hz, 450 W universal motor, maintenance-free gear with safety slipping clutch and in-feed system with machine screw spindle, safety switch. In a box.

Art. No. 572100 580:00

£ **499.⁰⁰**

←**ACC**→

Automatic Circuit Control
with automatic retraction

German quality product



Only 4.7 kg

36
MONTHS
WARRANTY!

Universal up to Ø 108 mm. Compact. Handy. Ultra-fast. 360° rotatable.

REMS Power-Press Basic-Pack

Electro-hydraulic radial press with switch-off signal after completed pressing cycle, for producing press connections Ø 10–108 mm. For driving REMS pressing tongs/pressing rings and other suitable makes of pressing tongs/pressing chains. Rotating pressing tongs seat with automatic locking. Electro-hydraulic drive with proven 110 V, 50–60 Hz, 450 W universal motor, robust planetary gear, eccentric reciprocating pump and compact high performance hydraulic system, safety switch. In sturdy steel case.

Art. No. 577011 790:00

769.⁰⁰

REMS Power-Press ACC Basic-Pack

Electro-hydraulic radial press with automatic return after completed pressing cycle (forced process), for producing press connections Ø 10–108 mm. See above for rest of delivery scope.

Art. No. 577010 880:00

£ **789.⁰⁰**

←**ACC**→

Automatic Circuit Control
with automatic retraction

German quality product

REMS technology
Li-Ion



Only 4.3 kg

36
MONTHS
WARRANTY!

Charging status indicator



Universal up to Ø 108 mm. Compact. Handy. Ultra-fast. 360° rotatable.

REMS Akku-Press Li-Ion Basic-Pack

Cordless radial press with switch-off signal after completed pressing cycle, for producing press connections Ø 10–108 mm. Li-Ion 14.4 V, 2.2 Ah battery, Li-Ion/Ni-Cd 110 V, 50–60 Hz, 65 W rapid charger. In sturdy steel case.

Art. No. 571013 900:00

£ **839.⁰⁰**

REMS Akku-Press ACC Li-Ion Basic-Pack

Cordless radial press with automatic return after completed pressing cycle (forced process), for producing press connections Ø 10–108 mm. See above for rest of delivery scope.

Art. No. 571014 1,040:00

£ **869.⁰⁰**



+ Gift package with every Basic-Pack:

1 cordless LED lamp Li-Ion free
extra Li-Ion 14.4 V, 2.2 Ah battery free
Value £ 140,10

¹⁾ Prolongation of the Manufacturer's Warranty of the drive unit to 36 months by annual inspection at an authorised REMS service depot. No registration necessary.

Details: www.rems.de → Downloads → Operating instructions → Select the operating instructions of the relevant drive unit → see "Prolongation of the Manufacturer's Warranty to 36 months".

**REMS pressing tongs – Proven a million times over.
For all common press fitting systems.**

Unique!

Patent EP 1 223 008

All the REMS pressing tongs marked by * in the catalogue have another connection and also fit the REMS Eco-Press manual radial press. Thus simple, inexpensive stocking.



German quality product

REMS pressing tongs M, V up to 35 mm each £ **79.⁰⁰**
REMS pressing tongs Mini

Other REMS pressing tongs up to 35 mm each £ **86.⁰⁰**
 e.g. F, G, HR, TH, U, UP, VP

Highly resistant pressing tongs made of forged and specially hardened steel. The pressing contours of the REMS pressing tongs are system-specific and correspond to the pressing contours of the respective press fitting systems. Perfect system-conformant, reliable pressing as a result. Pressing jaws of the pressing tongs with high-precision cut and exactly rounded pressing contour on CNC machining centres. Much lower production tolerances than only cast pressing contour as a result.

Traceability according to EN 1775:2007

REMS pressing tongs/pressing rings with pressing contour M, V, SA, B, HR and UP have worked a specific marking into the pressing contour which leaves a lasting impression on the pressed fitting after the pressing process. This enables the user to check again whether the most suitable pressing tongs or the suitable pressing ring have been used to make the pressfit connection even after the pressing process.

With this traceability REMS fulfils the recommendations of the European standard EN 1775:2007 for the installation of pressfitting systems for gas.



Example REMS pressing tongs M: Impression "M" on pressed fitting for traceability according to EN 1775:2007

New

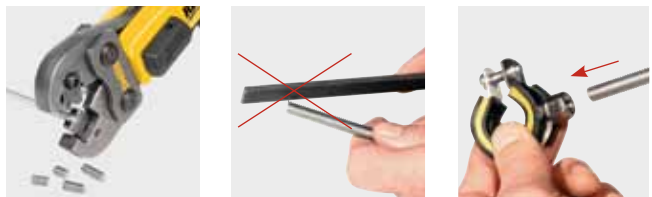
German quality product

REMS pressing rings for large dimensions. Fit. Press. Finished.

REMS pressing rings (PR-3S) with 3 swivellable pressing formers mounted on a jointed ring for large dimension complex pressings. Optimum pressing by radially controlled movement of the pressing formers. Pressing contour M for Geberit Mapress and other suitable systems.

| | | |
|---|-----------------|-----------------|
| REMS pressing ring M 42 (PR-3S) | Art. No. 572706 | 395.00 |
| REMS pressing ring M 54 (PR-3S) | Art. No. 572708 | 395.00 |
| Intermediate tongs Z2 for driving REMS pressing rings (PR-3S) 42–54 mm | Art. No. 572795 | 129.00 |
| Steel case | Art. No. 572810 | 50.00 |
| Pressing ring set complete | | £ 991.00 |

only £ **969.⁰⁰**



Cropping tongs with reversible cutting inserts for steel, stainless steel, M 6–M 12, up to strength class 4.8 (400 N/mm²).

REMS cropping tongs M – cutting threaded bars. Ultra-fast.

Unique! – Patent EP 1 223 008

All cropping tongs marked by * have another connection for manual drive by the manual radial press REMS Eco-Press. Thus simple, inexpensive stocking.

For REMS Mini-Press ACC:

REMS Mini cropping tongs – cuts in just 2 seconds!

| | | |
|------|-----------------|------------------------------|
| M 6 | Art. No. 578620 | |
| M 8 | Art. No. 578621 | |
| M 10 | Art. No. 578622 | instead of £ 134.00 now only |

For REMS radial presses (except REMS Mini-Press ACC) and suitable radial presses of other makes:

REMS cropping tongs

| | | |
|------|-----------------|------------------------------|
| M 6* | Art. No. 571890 | |
| M 8* | Art. No. 571895 | |
| M 10 | Art. No. 571865 | |
| M 12 | Art. No. 571870 | instead of £ 134.00 now only |

New

German quality product

£ **119.⁰⁰**/piece



REMS CamScope – Brilliant pictures and videos of cavities, shafts and pipes.

Documentation on MicroSD card.

Removable controller unit for radio signal transmission!



New

including
2 GB MicroSD card

Ø 9 mm or 16 mm



REMS CamScope Set 16-1

Mobile, handy endoscope camera with radio signal transmission for low cost inspection and damage analysis of places with difficult access such as cavities, shafts, pipes etc. Documentation of photos and videos on MicroSD card. Handheld unit with 4 batteries 1.5 V, AA, LR6. Removable controller unit with radio signal transmission, 3.5" TFT-LCD colour display, MicroSD card slot, USB port, video out socket PAL/NTSC, integrated Li-Ion battery, 3.7 V, 1.2 Ah. 2 GB MicroSD card. Camera cable set Color 16-1, consisting of colour camera Ø 16 mm with dimmable white light LEDs and fixed focus function and 1 m formable push cable. Add-on mirror, add-on hook, add-on magnet. Voltage supply/charger Li-Ion 100–240 V, 50–60 Hz, 36 W, for controller unit. USB cable, video cable. In sturdy case. Art. No. 175110 ~~279.00~~

£ **259.00**

The date and time of the recording can be saved in the photo and video as an option. Immediate playback of saved recordings or transmission to other devices via MicroSD card. USB connector for direct connection to PC or laptop.

REMS CamScope Set 9-1

Mobile, handy endoscope camera with radio signal transmission for low cost inspection and damage analysis of places with difficult access such as cavities, shafts, pipes etc. Documentation of photos and videos on MicroSD card. Handheld unit with 4 batteries 1.5 V, AA, LR6. Removable controller unit with radio signal transmission, 3.5" TFT-LCD colour display, MicroSD card slot, USB port, video out socket PAL/NTSC, integrated Li-Ion battery, 3.7 V, 1.2 Ah. 2 GB MicroSD card. Camera cable set Color 9-1, consisting of colour camera Ø 9 mm with dimmable white light LEDs and fixed focus function and 1 m formable push cable. Voltage supply/charger Li-Ion 100–240 V, 50–60 Hz, 36 W, for controller unit. USB cable, video cable. In sturdy case. Art. No. 175111 ~~315.00~~



900 mm push cable extension

couplable up to a working length of 4.5 m Art. No. 175105 £ **31.50**

£ **289.00**

German quality product



High cooling performance,
e.g. ¾" steel pipe in just 9 min*.

REMS Frigo 2 – electrically freeze instead of emptying. Ultra-fast up to 2".

Unique! Patent EP 1 108 944

One-size freezer heads for the core working range Ø ¼ – 1" / Ø 15 – 35 mm, no reducing inserts required. Very compact freezing heads with specially geometrically designed recesses for holding the respective different pipe diameters. Very narrow, only 50 mm wide. Can be used everywhere, even in narrow places. No pastes/greases required.

REMS Frigo 2

Electrical pipe freezing device with closed coolant circuit. For steel, copper, plastic, multilayer composite pipes, Ø ¼–2", Ø 10–60 mm. Cooling unit 110 V, 50 Hz, 430 W, 2 coolant hoses, 2 clamping straps, spray bottle. Equipment for Ø ¼–1¼", 15–42 mm. In sturdy steel housing. Art. No. 131011 ~~990.00~~

£ **829.00**



Upgrade kit 1½–2" / 54–60 mm

Art. No. 131160 ~~187.00~~ £ **119.00**

*ambient/water temperature approx. 18°C.

One system – 4 applications!
Ideal for plumbers

New



German
quality product

REMS Picus SR Set Titan

Electric diamond core drilling machine with speed regulation. For core drilling in steel-reinforced concrete up to Ø 162 (200) mm and masonry up to Ø 250 mm. For dry or wet drilling, hand held or with drill stand. Drive machine with drilling crown connection thread UNC 1¼ male, G ½ female, maintenance-free 2-step gear with safety slip clutch, 110 V, 50–60 Hz, 2200 W universal motor. Stepless electronic speed regulation 200 rpm to 500 rpm (1st gear) or 500 rpm to 1200 rpm (2nd gear), overheating protection. Multifunction electronics with soft starting, idle speed limiting, overload protection, blocking protection. Touch switch with lock. Personal protection switch (PRCD). Water supply device with adjustable shut-off valve and quick coupling with water stop and ½" hose connection. Stabiliser. Single open ended wrench size 32. In sturdy steel case. Drill stand REMS Titan including fastening kit for masonry and concrete. Without diamond core drilling crowns.
 Art. No. 183022 ~~2,500.00~~

£ **1,899.00**

REMS Picus SR Set 62-82-132 Titan

Same as Art. No. 183022, but with REMS Universal diamond core drilling crowns UDKB Ø 62, 82, 132 mm.
 Art. No. 183023 ~~3,100.00~~

£ **2,699.00**

... now with REMS Titan drill stand – for highest demands. For core drilling up to Ø 300 mm.

REMS Picus S2/3.5 – for core drillings in steel-reinforced concrete etc. up to Ø 300 mm.



REMS Picus S2/3,5 Set Titan

Electric diamond core drilling machine for core drilling in steel-reinforced concrete and masonry up to Ø 300 mm. For dry or wet drilling with drill stand. Drive machine with drilling crown male connection thread UNC 1¼, maintenance-free 2-step gear with safety slip clutch, 110 V, 50–60 Hz, 3420 W universal motor. Multifunction electronics with soft starting, idle speed limiting, overload protection, blocking protection. Rocker switch. Personal protection switch (PRCD). Load speed drilling spindle 320 rpm, 760 rpm. Water supply device with adjustable shutoff valve and quick coupling with water stop and ½" hose connection. Easy loosening ring. Single open-ended wrench size 32. Drill stand REMS Titan including fastening kit for masonry and concrete. Without diamond core drilling crowns.
 Art. No. 180030 ~~3,140.00~~

£ **2,799.00**

REMS Picus S1 – the low cost alternative

New



... now with REMS Simplex 2 drill stand

Robust, handy drill stand for core drilling up to Ø 200 mm. Drill column made of rigid, unbendable square precision steel tube Ø 50 mm, cold solidified, with extra narrow tolerance, for low-vibration guiding of the slide

REMS Picus S1 Set Simplex 2

Electric diamond core drilling machine for core drilling in steel-reinforced concrete up to Ø 102 (132) mm, masonry up to Ø 162 mm. For dry or wet drilling, hand held or with drill stand. Drive unit with drilling crown male connection thread UNC 1¼, female connection thread G ½, maintenance-free gear with safety slip clutch, 230 V, 50–60 Hz, 1800 W universal motor. Multifunction electronics with soft starting, idle speed limiting, overload protection, blocking protection. Touch switch with lock Personal protection switch (PRCD). Load speed drilling spindle 580 rpm. Water supply device with adjustable shutoff valve and quick coupling with water stop and ½" hose connection. Stabiliser. Drill start aid G ½ with Ø 8 mm drill, size 3 Allen key. Size 32 opened ended wrench. In sturdy steel case. REMS Simplex 2 drill stand including fastening set for masonry and concrete. Without diamond core drilling crowns.
 Art. No. 180032 ~~1,590.00~~

£ **1,249.00**

REMS Universal diamond core drilling crowns

Inductively soldered on fully automatic soldering machines for constant high quality of the soldered connection. Drilling tubes with soldered diamond segments can be resoldered by simple hard soldering.

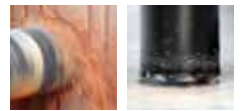
Universally usable for dry and wet drilling, hand held or with drill stand. Uniform UNC 1/4 female connection thread. Drilling depth 420 mm. Diamond segments with wedge-shaped cut ("roof shape") for fast, easy and quiet drilling. Specially developed, high quality diamond segments with high diamond content and special bonding for excellent drilling performance and very long life. Ideal for universal use in steel-reinforced concrete and masonry.

Can be driven by all REMS Picus drive units and suitable drive units of other makes with a UNC 1/4 male connection thread.

**Inductively soldered!
Resolderable!**



-30%



German quality product

| Ø × drilling depth × connection | | Art. No. | £ | Offer £ |
|---------------------------------|----|----------|--------|---------------|
| UDKB 32 × 420 × UNC 1/4 | 4 | 181010 | 117.00 | 81.90 |
| UDKB 42 × 420 × UNC 1/4 | 4 | 181015 | 117.00 | 81.90 |
| UDKB 52 × 420 × UNC 1/4 | 5 | 181020 | 126.00 | 88.20 |
| UDKB 62 × 420 × UNC 1/4 | 6 | 181025 | 149.00 | 104.30 |
| UDKB 72 × 420 × UNC 1/4 | 7 | 181030 | 167.00 | 116.90 |
| UDKB 82 × 420 × UNC 1/4 | 7 | 181035 | 176.00 | 123.20 |
| UDKB 92 × 420 × UNC 1/4 | 8 | 181040 | 189.00 | 132.30 |
| UDKB 102 × 420 × UNC 1/4 | 8 | 181045 | 194.00 | 135.80 |
| UDKB 112 × 420 × UNC 1/4 | 9 | 181050 | 225.00 | 157.50 |
| UDKB 125 × 420 × UNC 1/4 | 10 | 181057 | 257.00 | 179.90 |
| UDKB 132 × 420 × UNC 1/4 | 11 | 181060 | 275.00 | 192.50 |
| UDKB 152 × 420 × UNC 1/4 | 12 | 181065 | 315.00 | 220.50 |
| UDKB 162 × 420 × UNC 1/4 | 12 | 181070 | 333.00 | 233.10 |
| UDKB 182 × 420 × UNC 1/4 | 12 | 181075 | 351.00 | 245.70 |
| UDKB 200 × 420 × UNC 1/4 | 12 | 181080 | 396.00 | 277.20 |
| UDKB 225 × 420 × UNC 1/4 | 13 | 181085 | 441.00 | 308.70 |
| UDKB 250 × 420 × UNC 1/4 | 14 | 181090 | 477.00 | 333.90 |
| UDKB 300 × 420 × UNC 1/4 | 22 | 181095 | 495.00 | 346.50 |

REMS universal diamond core drilling crowns LS (LASER)

Laser-welded on fully automatic welding machines for consistent high quality of the weld. High temperature-resistant, even under extreme temperature load, no desoldering of the segments due to overheating.

Universally usable for dry and wet drilling, hand held or with drill stand. Uniform UNC 1/4 female connection thread. Drilling depth 420 mm. Diamond segments with wedge-shaped cut ("roof shape") for fast, easy and quiet drilling. Specially developed, high quality diamond segments with high diamond content and special bonding for excellent drilling performance and very long life. Ideal for universal use in steel-reinforced concrete and masonry.

Can be driven by all REMS Picus drive units and suitable drive units of other makes with a UNC 1/4 male connection thread.

**Laser-welded!
High temperature-resistant!**



-30%



| Ø × drilling depth × connection | | Art. No. | £ | Offer £ |
|---------------------------------|----|----------|--------|---------------|
| UDKB-LS 32 × 420 × UNC 1/4 | 1 | 181410 | 128.00 | 89.60 |
| UDKB-LS 42 × 420 × UNC 1/4 | 4 | 181415 | 128.00 | 89.60 |
| UDKB-LS 52 × 420 × UNC 1/4 | 5 | 181420 | 138.00 | 96.60 |
| UDKB-LS 62 × 420 × UNC 1/4 | 6 | 181425 | 164.00 | 114.80 |
| UDKB-LS 72 × 420 × UNC 1/4 | 6 | 181430 | 184.00 | 128.80 |
| UDKB-LS 82 × 420 × UNC 1/4 | 7 | 181435 | 194.00 | 135.80 |
| UDKB-LS 92 × 420 × UNC 1/4 | 8 | 181440 | 207.00 | 144.90 |
| UDKB-LS 102 × 420 × UNC 1/4 | 9 | 181445 | 213.00 | 149.10 |
| UDKB-LS 112 × 420 × UNC 1/4 | 9 | 181450 | 247.00 | 172.90 |
| UDKB-LS 125 × 420 × UNC 1/4 | 10 | 181457 | 283.00 | 198.10 |
| UDKB-LS 132 × 420 × UNC 1/4 | 10 | 181460 | 302.00 | 211.40 |
| UDKB-LS 152 × 420 × UNC 1/4 | 11 | 181465 | 346.00 | 242.20 |
| UDKB-LS 162 × 420 × UNC 1/4 | 12 | 181470 | 366.00 | 256.20 |
| UDKB-LS 182 × 420 × UNC 1/4 | 13 | 181475 | 386.00 | 270.20 |
| UDKB-LS 200 × 420 × UNC 1/4 | 14 | 181480 | 435.00 | 304.50 |

Adapter for connection of REMS Universal diamond core drilling crowns on drive units with other connection thread



+ Adapter free*

*When buying 3 Universal diamond core drilling crowns or more you get a free adapter of your choice.

Adapter UNC 1/4 male – G 1/2 male

Art. No. 180052

£ **35.¹⁰** /piece

Adapter UNC 1/4 male – G 1/2 female

Art. No. 180056

£ **17.¹⁰** /piece

Adapter UNC 1/4 male – Hilti BI

Art. No. 180053

£ **17.¹⁰** /piece

Adapter UNC 1/4 male – Hilti BU

Art. No. 180054

£ **53.¹⁰** /piece

Adapter UNC 1/4 male – Würth

Art. No. 180055

£ **26.¹⁰** /piece

New

German quality product



Tripod (accessory)



REMS Python – save expensive fittings. Super easy bending up to Ø 2", Ø 63 mm.

REMS Python

Hydraulic pipe bender for dimensionally accurate bending of pipes up to 90°. Steel pipes DIN EN 10255 Ø ½–2", multilayer composite tubes Ø 32–63 mm. Bender drive with 2 back former supports, 2 back formers steel or composite, bending formers inch or mm. In sturdy transport case.

Set St ¾ - ½ - ¾ - 1 - 1¼"

for steel pipes Art. No. 590020

£ **765.⁰⁰**

Set St ½ - ¾ - 1 - 1¼ - 1½ - 2"

for steel pipes Art. No. 590021

£ **882.⁰⁰**

Set V 40 - 50 - 63 mm

for multilayer composite tubes Art. No. 590022

£ **882.⁰⁰**

Tripod

Art. No. 590150

£ **89.¹⁰**

REMS Swing – Bend pipes where they are laid, up to Ø 32 mm.

Fast operation by practical multifunction lever for **fast in-feed and fast return**. Hardened steel rack.



German quality product

REMS Swing

One-handed pipe bender Ø 10–32 mm, Ø ¼–¾", up to 90°. Soft copper pipes Ø 10–22 mm, Ø ¼–¾", s ≤ 1 mm, soft jacketed copper pipes Ø 10–18 mm, Ø ¼–¾", s ≤ 1 mm, jacketed carbon steel pipes of the press fitting systems Ø 12–18 mm, soft precision steel pipes Ø 10–18 mm, s ≤ 1 mm, multilayer composite tubes Ø 14–32 mm. Up to Ø 26 mm with bender drive, bending formers, universal back former carriers with back formers, in a sturdy steel box/case. Up to Ø 32 mm with bender drive, bending formers, 2 back former carriers with back formers, in a sturdy steel case.

Copper pipes etc.

Set 12-15-18-22

Art. No. 153025 ~~199.00~~

£ **159.⁰⁰**

Multilayer composite tubes etc.

Set 14-16-18-20-25/26

Art. No. 153022 ~~199.00~~

£ **159.⁰⁰**

Set 16-18-20-25/26-32

Art. No. 153023 ~~288.00~~

£ **229.⁰⁰**

REMS Curvo – Bending pipes without creasing up to Ø 40 mm, 180°. Without vice. Ready to use immediately without setting.

Bending instead of expensive fittings!

The cost of REMS Curvo is recovered just after a few bends.



1000 W – only 8 kg

German quality product

REMS Curvo Basic-Pack

Electric pipe bender Ø 10–40 mm, Ø ¼–1½", up to 180°. Hard, semi-hard, soft copper pipes, also thin-walled, Ø 10–35 mm, Ø ¼–1½", soft jacketed copper pipes, also thin-walled, Ø 10–18 mm, pipes of the press fitting systems made of stainless steel Ø 12–28 mm, carbon steel, also jacketed, Ø 12–28 mm, soft precision steel pipes Ø 10–28 mm, steel pipes DIN EN 10255 Ø ¼–¾", electrical installation pipes DIN EN 50086 Ø 16–32 mm, multilayer composite tubes Ø 14–40 mm, among other things drive machine with maintenance-free gear with safety slip clutch, 110 V, 50–60 Hz, 1000 W universal motor, continuous, electronic safety switch, right and left-hand rotation. Fast and creep speed for precise bending. Insert bolt. Bending and back formers. In sturdy steel case.

Art. No. 580010 ~~799.00~~

£ **649.⁰⁰**



REMS Curvo 50 – wrinkle free bending of large pipes.



REMS Curvo 50 Basic-Pack

Electric pipe and tube bender Ø 10 – 50 mm, up to 90°. Steel pipes DIN EN 10255 Ø ¼ – 1¼", hard, half-hard and soft copper tubes, Ø 10 – 42 mm, thin-wall copper tubes Ø 10 – 35 mm, pipes of the press fitting systems made of stainless steel Ø 12 – 42 mm, carbon steel Ø 12 – 35 mm, carbon steel coated Ø 12 – 28 mm, multi-layer composite tubes Ø 14 – 50 mm and others. In sturdy steel case.

Art. No. 580010 ~~1,890.00~~

£ **1.599.⁰⁰**

Bending formers and back formers

Bending formers and back formers. 180°, form and pressure resistant, in highstrength, high-slide, glass-fibre reinforced polyamide 90° (Ø 35 R 100, Ø 42 R 140, Ø 50 R 135, Ø 1" R 100, Ø 1¼" R 140). Optimum mating of bending formers and back formers ensures sliding appropriate to the material without cracks and wrinkles. Angle scale provided on each bending former and mark on the back former ensure precise bending. Rapid change of bending formers and back formers.



List price **– 20 %**



REMS roll groove device – with oil hydraulic in-feed.

The ideal extension to your threading machine. Quick, easy assembly.

REMS roll groove device

Roll groove device for grooving pipes for pipe coupling systems DN 25–200 (300), 1–8" (12"). Roll grooving device, manual hydraulic pump, integrated, graduated setting disc for automatic groove depth stop, 1 set of groove rollers (pressure roller, back pressure roller) 2–6", Allen key.

Drive by:

REMS Magnum, REMS Tornado
Ridgid 300

Art. No. 347000
Art. No. 347001

instead of £ ~~1,940.00~~ now only



German quality product

£ **1,199.⁰⁰**

German quality product



REMS Tornado – a class on its own.

Automatic clamping chuck
Universal automatic die head
Automatic lubrication cooling

REMS Tornado 2000

Threading machine for pipe threads (1/16) ½–2", 16–63 mm, bolt threads (6) 10–60 mm, ¼–2". With maintenance-free gear, safety foot switch with emergency stop, 2 automatic clamping chucks, automatic lubrication cooling. With tool set, consisting of a universal automatic die head for all threads, including long threads, automatically opening, with automatic thread length for conical threads, dies for conical pipe thread, ISO 7-1, DIN EN 10226 (DIN 2999, BSPT) R ½–¾ and R1–2 right, pipe cutter, pipe inside burr remover, pressing lever. Height-adjustable material shelf. 110 V, 50–60 Hz, 1700 W universal motor. 53 rpm. Portable version on tripod, with large, removable oil basin and chip tray.

Art. No. 340200

2,770.00

+ 1 REMS Spezial oil 5 l

Art.-No. 140100

£ 37.20

~~£ 2,807.20~~

£ **1,599.⁰⁰**

With universal automatic die head,
automatically opening.

German quality product



REMS Magnum – the compact one up to 2". Favourable dimensions, good weight. Excellent round and clean thread.

REMS Magnum 2000 L-T

Threading machine for pipe threads ($\frac{1}{16}$) $\frac{1}{4}$ –2", 16–63 mm, bolt threads (6)8–60 mm, $\frac{1}{4}$ –2". With maintenance-free gear, safety foot switch with emergency stop, proven, self-reinforcing quick-clamping centring chuck, automatic lubrication cooling. With tool set, consisting of a universal automatic die head for all threads, including long threads, automatically opening, with automatic thread length for conical threads, dies for conical pipe thread ISO 7-1, DIN EN 10226 (DIN 2999, BSPT) R $\frac{1}{2}$ – $\frac{3}{4}$ and R 1–2 right, pipe cutter, pipe inside burr remover, pressing lever. Tool shelf. Lightweight version L-T with removable, large oil basin and chip tray. 110 V, 50–60 Hz, 1700 W universal motor. 53 rpm. For workbench, stand or wheel-stand with material support.

Art. No. 340226 £ 2,920.00

+ REMS wheel stand Art.-No. 344100 £ 322.00
+ 1 REMS Spezial oil 5 l Art.-No. 140100 £ 37.20

£ 3,279.20

£ **1,799.⁰⁰**

With universal automatic die head,
automatically opening.

German quality product



REMS Magnum – the super machine up to 3". Excellent round and clean thread up to 3" by 5 dies.

REMS Magnum 3000 L-T

Threading machine for pipe threads ($\frac{1}{16}$) $\frac{1}{2}$ –3", 16–63 mm, bolt threads (6)20–60 mm, $\frac{1}{2}$ –2". With maintenance-free gear, safety foot switch with emergency stop, proven, self-reinforcing quick-clamping centring chuck, automatic lubrication cooling. Machine complete with tool sets $\frac{1}{16}$ –2" and 2 $\frac{1}{2}$ –3", consisting respectively of universal automatic die head for all threads, including long threads, automatically opening, with automatic thread length for conical threads, dies for conical pipe threads ISO 7-1, DIN EN 10226 (DIN 2999, BSPT) R right, pipe cutter, pipe inside burr remover, pressing lever. Tool shelf. Lightweight version L-T with removable, large oil basin and chip tray. 110 V, 50–60 Hz, 1700 W universal motor. 23 rpm. For workbench, stand or wheel-stand with material support.

Art. No. 380309 £ 3,790.00

+ REMS wheel stand Art.-No. 344100 £ 322.00
+ 1 REMS Spezial oil 5 l Art.-No. 140100 £ 37.20

£ 4,149.20

£ **2,499.⁰⁰**

With universal automatic die head,
automatically opening.

German quality product



REMS Magnum – the super machine up to 4". Excellent round and clean thread up to 4" by 6 dies.

REMS Magnum 4000 L-T

Threading machine for pipe threads ($\frac{1}{16}$) $\frac{1}{2}$ –4", 16–63 mm, bolt threads (6) 20–60 mm, $\frac{1}{2}$ –2". With maintenance-free gear, safety foot switch with emergency stop, proven, self-reinforcing quick-clamping centring chuck, automatic lubrication cooling. With tool sets $\frac{1}{16}$ –2" and 2 $\frac{1}{2}$ –4", consisting respectively of universal automatic die head for all threads, including long threads, automatically opening, with automatic thread length for conical threads, dies for conical pipe threads ISO 7-1, DIN EN 10226 (DIN 2999, BSPT) R right, pipe cutter, pipe inside burr remover, pressing lever. Tool shelf. Lightweight version L-T with removable, large oil basin and chip tray. 110 V, 50–60 Hz, 1700 W universal motor. 23 rpm. For workbench, stand or wheel-stand with material support.

Art. No. 380444 4,769.20

+ REMS wheel stand Art.-No. 344100 £ 322.00
+ 1 REMS Spezial oil 5 l Art.-No. 140100 £ 37.20

£ 4,769.20

£ **3,349.⁰⁰**

REMS Amigo E – the lightest, strongest and fastest up to 1”.



950 W
only 3.4 kg

German quality product



REMS Amigo E Set M 20-25-32

Electric die stock with quick-change die heads. For pipe threads ¼–1”, 16–32 mm, for right and left-hand threads. Drive machine with maintenance-free gear, powerful 110 V, 50–60 Hz, 950 W universal motor, safety switch, power boosting automatic carbon brush adjustment in the direction of rotation selection. Peak consumption up to 1500 W. Right and left-hand rotation. Support bracket for both directions of rotation. REMS eva quick-change die heads for threads for electrical installation pipes DIN EN 60423 M. In sturdy steel case. Art. No. 530014 495.00

£ **319.00**

REMS Amigo – The smallest, lightest, strongest and fastest up to 1¼”.



1200 W
Only 3.5 kg

German quality product



REMS Amigo Set M 16-20-25-32

Electric die stock with quick-change die heads. For pipe threads ¼–1¼”, 16–40 mm, bolt threads 6–30 mm, ¼–1”. For right and left-hand threads. Drive machine with maintenance-free gear, powerful universal motor 110 V, 50–60 Hz, 1200 W, safety switch, power boosting automatic carbon brush adjustment in the direction of rotation selection. Peak consumption up to 1800 W. Right and left-hand rotation, overload protection. Support bracket for both directions of rotation. REMS eva quick-change die heads for threads for electrical installation pipes DIN EN 60423 M. In sturdy steel case. Art. No. 530022 639.00

£ **459.00**

REMS Amigo 2 – extremely strong up to 2”.



1700 W
Only 6.5 kg

German quality product



REMS Amigo 2 Set R ½-¾-1-1¼-1½-2

Electric die stock with quick-change die heads. For pipe threads ½–2”, 16–50 mm, bolt threads 6–30 mm, ¼–1”. For right and left-hand threads. Drive machine with maintenance-free gear, powerful 110 V, 50–60 Hz, 1700 W universal motor, safety switch, power boosting automatic carbon brush adjustment in the direction of rotation selection, right and left-hand rotation. Support bracket for both directions of rotation. REMS eva quick-change die heads for conical pipe threads ISO 7-1, DIN EN 10226 (DIN 2999, BSPT) R ½-¾-1-1¼-1½-2 right. In sturdy steel case. Art. No. 540020 989.00

£ **689.00**

REMS eva – the die stock for professionals.

Very easy starting and thread cutting by precision processing of the die head, dies and cover in a compact unit.
Ratchet lever of steel, thick plastic jacket.



German quality product

REMS eva Set R 1/2-3/4-1-1 1/4

Manual die stock with quick-change die heads. For pipe threads 1/2"-2", 16-50 mm, bolt threads 6-30 mm, 1/4"-1". For right and left-hand threads. 1 ratchet lever for the entire cutting range. Quick-change die heads R 1/2-3/4-1-1 1/4 with dies for conical pipe threads ISO 7-1, DIN EN 10226 (DIN 2999, BSPT) R right-hand. In sturdy steel case.
Art. No. 520015 ~~263.00~~

£ **239.⁰⁰**

REMS eva Set R 1/2-3/4-1-1 1/4-1 1/2-2

Manual die stock with quick-change die heads R 1/2-3/4-1-1 1/4-1 1/2-2.
In sturdy steel case.
Art. No. 520017 ~~391.00~~

£ **329.⁰⁰**



German quality product



Can be washed out with water, tested by experts.

REMS Spezial – high alloy thread cutting oil

High alloy mineral oil-based thread cutting oil. Developed especially for cutting threads. Very high lubricating and cooling effect. Absolutely essential for clean threads and long life of dies, tools and machines.

Spray 600 ml

Art. No. 140105

~~11.90~~

£ **8.⁹⁰**

Canister 5 l

Art. No. 140100

~~37.20~~

£ **23.⁹⁰**

Completely soluble in water. For drinking water pipes etc.
According to DVGW, ÖVGW, SVGW regulations.

REMS Sanitol – mineral oil-free thread cutting oil

Synthetic, mineral oil-free thread cutting oil. Dyed red for checking washout. Excellent corrosion protection. Water-free. Developed especially for drinking water pipes, but also excellently suitable for universal thread cutting. Very high lubricating and cooling effect. Absolutely essential for clean threads and long life of dies, tools and machines.

Spray 600 ml

Art. No. 140115

~~13.00~~

£ **9.⁹⁰**

Canister 5 l

Art. No. 140110

~~49.70~~

£ **32.⁵⁰**



W 1.303



DW-0201AS2032



7808-649



Sale through specialist dealers.



REMS (UK) Ltd.

Unit 5 · Ash Industrial Estate
Flex Meadow · Harlow · Essex CM19 5TJ
Phone +44 12 79 41 36 98
Fax +44 12 79 41 37 04
www.rems.de
GBR@rem.de